

Dash Procedure (Dash Cluster 1984 - 1989 Corvette) for color upgrade

Chapter 1

Please read all instructions before proceeding.



1. Disconnect negative battery cable.
2. Use small flat blade screw driver to push in retainer flange on back side of headlight switch knob and pull knob off.
3. Remove upper dash pad. There are screws under the overhang and 2 screws in the defrost duct. Carefully pull rearward to release tabs. Pull passenger side corner rearward and slide dash through passenger door window.
4. Remove screws from dash bezel.
5. Lower (tilt) steering wheel to lowest position and remove tilt lever by unscrewing counterclockwise.
6. Carefully remove bezel.
7. Remove (4) 7mm screw and holding cluster to support.
8. Place clean soft rag across steering column. Pull left side of cluster toward you slightly and lift. Pull from behind center cluster bezel. Lay cluster face down on rag and using flat head screw driver release locking tabs on dash electrical connectors(2). Carefully pull connectors out of socket. Car can be moved without cluster installed.

Chapter 2

These instructions are for customers that purchased our Dash lens upgrade and want to do the install ther



1. Remove the cluster from the car. Refer to Cluster Removal Procedure in [Chapter 1](#)
2. Lay the cluster face down on a smooth flat surface covered with a soft towel. Always be careful not to scratch or damage the LCD screens.
3. Remove the 7/32 mm headed screws holding the metal back plate to the cluster housing. Lay the metal plate to the side.



4. Unplug the odometer motor wire connector from the circuit board. The 1984- 1988 has two wires in the connector; the 1989 has four wires in the connector.

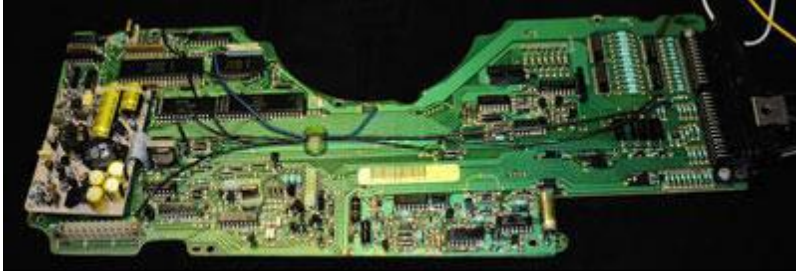


5. Remove the three 7/32 mm headed screws holding the odometer the cluster.



6. To access the outer board, remove all 7 of the 7/32 screws holding the upper circuit board to the cluster housing. This includes the two screws at the harness connector.

7. Once the screws are removed, take hold of each end of the circuit board and carefully lift straight upward so as not to bend the terminal pins. This unplugs the board from the cluster and lower circuit board.



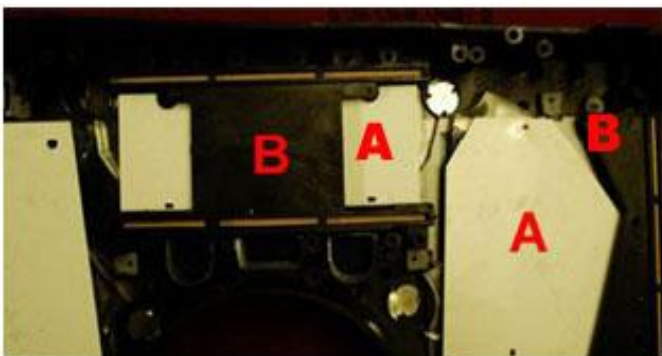
8. Place the removed board on a clean, stable, non-metallic surface.

9. Now remove the 22 screws for the driver board.



10. With the screws removed you can now lift off the driver board from the LCD bridge connector frames. It is common for the board to stick to the individual connectors, which are usually stuck to the LCD panels. If you go slowly lifting the board often times they will separate with no issue. If you lift the LCD panel at all during this process YOU MUST MAKE SURE IT IS PROPERLY RESEATED. PLEASE CALL IF YOU ARE AT ALL UNSURE AS THIS CAN LEAD TO A CRACKED LCD PANEL (or panels).

11. While gently pressing down on the light diffuser (A), carefully lift the retainer (B) off. The pink jumper bridges in the retainer slots should stay on the LCD panels. Do not remove these. If they do come off, put them aside for reassembly. Remove diffuser. There are three of these diffuser/retainers. Take note of the locator pins on the diffusers and the manner in which they fit into the retainers. Also, note which diffusers go where and their orientation.



12. Carefully lift the color film from the cluster. Check to make sure the LCD panels are properly seated. There are three panels. The Tach & Speedo panels (square) are kept in place by two tabs and two cushions. The center panel (rectangle) has two tabs and two cushions, but also has a spring to keep this panel positioned. **Make sure, if this panel has been lifted, that this spring has not slid between the panel and the cluster body. This is the main cause of cracking this panel.**

13. Now remove the stock lens.

14. After re-inspecting to make sure the panels are positioned properly, place Dash Upgrade film color upgrade in place and position locator tabs on locator pins.



15. Carefully place light diffuser panels in place, and place the retainers in place. Take care in not bending the jumper bridges. Also, make sure the retainer seats onto its locator pins (along the outside) and that the diffuser pins seat inside the retainers. **DO NOT FORCE THE RETAINERS INTO POSITION.** Make sure all diffusers and retainers are properly seated. If there are any separated jumpers, place them in their respective slot at this time. Note there are two jumper sizes.

16. Put the Inner circuit board in place. It is recommended that all the screws be started by hand, and that they be tightened to pull the board down against the frame. **DO NOT OVER TIGHTEN.** Additionally, start with the center screws and spiral outward.



17. After the driver board is in place it is time to install the main board. It is a good idea to get into a position to see under the main board to help line up the interconnector pins. Depending on the condition of the interconnector receiver, the pins may easily slide into the receiver or, if recently replaced, may be very tight. If they are very loose, it may be a good time to replace these components (we have these in stock). If they are tight first be certain the pins are properly aligned and inserted into their respective position of the receiver. Then apply downward pressure on the receiver, not on the board.

18. Re-secure the main board to the cluster body (do not over-tighten) and install the odometer. When installing the odometer, make certain to properly plug in the lead to the board.

19. Install rear cover and dash is ready for installation into the car. Any questions please call us at 1-888-USM-RACER (1-888-876-7223). Thanks and enjoy.

Corvette Dash Cluster LED Upgrade Instructions

Part 1

Please read all instructions before proceeding.

1. Disconnect negative battery cable.
2. Use small flat blade screw driver to push in retainer flange on back side of headlight switch knob and pull knob off.
3. Remove upper dash pad - There are screws under the overhang and 2 screws in the defrost duct. Carefully pull rearward to release tabs. Pull passenger side corner rearward and slide dash through passenger door window.
4. Remove screws from dash bezel.
5. Lower (tilt) steering wheel to lowest position and remove tilt lever by unscrewing counterclockwise.
6. Carefully remove bezel.
7. Remove (4) 7mm screw and holding cluster to support.
8. Place clean soft rag across steering column. Pull left side of cluster toward you slightly and lift. Pull from behind center cluster bezel. Lay cluster face down on rag and using flat head screw driver release locking tabs on dash electrical connectors(2). Carefully pull connectors out of socket. Car can be moved without cluster installed.

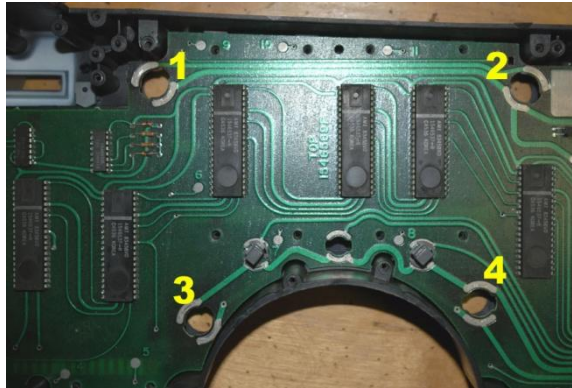
Part 2

1. Remove the cluster from the car. Refer to Cluster Removal Procedure in [Part 1](#)
2. Lay the cluster face down on a smooth flat surface covered with a soft towel. Always be careful not to scratch or damage the LCD screens.
3. Remove the 7/32 mm headed screws holding the metal back plate to the cluster housing. Lay the metal plate to the side.
4. Unplug the odometer motor wire connector from the circuit board. The 1984- 1988 has two wires in the connector; the 1989 has four wires in the connector.
5. Remove the three 7/32 mm headed screws holding the odometer the cluster.
6. To access the outer board, remove all 7 of the 7/32 screws holding the upper circuit board to the cluster housing. This includes the two screws at the harness connector.
7. Once the screws are removed, take hold of each end of the circuit board and carefully lift straight upward so as not to bend the terminal pins. This unplugs the board from the cluster and lower circuit board. It may be necessary to slightly rock the board side-to-side to lift off the bridge pin connector.
8. Place the removed board on a clean, stable, non-metallic surface.

Corvette Dash Cluster LED Upgrade Instructions (cont.)

9. Remove bulbs (the bulbs will be shipped already seated in their sockets) from the packaging. On the bottom of the socket you will notice a white mark. This mark is the polarity mark. All 4 bulb/sockets will have this mark.

10. Remove the 4 existing bulbs from the board. The bulb positions are labeled 1-4 below.

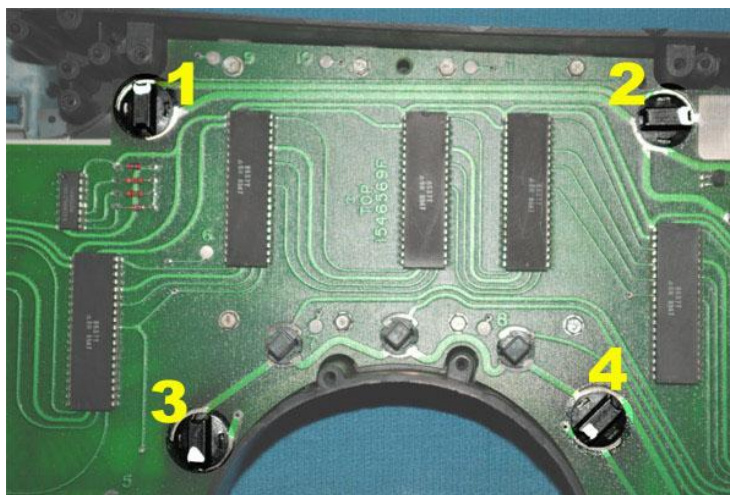


11. Starting at position 1 - Take an LED bulb assembly and with the white polarity mark in about the 10 o'clock position insert the bulb into the hole for position 1 making sure the socket is even with the board and deep enough to engage the socket retainers. Now twist the assembly to lock into position. Do not force it. When fully seated the polarity mark should be in the 12 o'clock position.

12. Move on to position 2 – Take an LED bulb assembly and with the white polarity mark in about the 2 o'clock position insert the bulb into the hole for position 2 making sure the socket is even with the board and deep enough to engage the socket retainers. Now twist the assembly to lock into position. Do not force it. When fully seated the polarity mark should be in the 3 o'clock position.

13. Position 3 - Take an LED bulb assembly and with the white polarity mark in about the 4 o'clock position insert the bulb into the hole for position 3 making sure the socket is even with the board and deep enough to engage the socket retainers. Now twist the assembly to lock into position. Do not force it. When fully seated the polarity mark should be in the 6 o'clock position.

14. Position 4 - Take an LED bulb assembly and with the white polarity mark in about the 6 o'clock position insert the bulb into the hole for position 4 making sure the socket is even with the board and deep enough to engage the socket retainers. Now twist the assembly to lock into position. Do not force it. When fully seated the polarity mark should be in the 8 o'clock position.



Corvette Dash Cluster LED Upgrade Instructions (cont.)

15. Reinstall main processor board. It is a good idea to get into a position to see under the main board to help line up the interconnector pins. Depending on the condition of the interconnector receiver, the pins may easily slide into the receiver or, if recently replaced, may be very tight. If they are very loose, it may be a good time to replace these components (we have these in stock). If they are tight first be certain the pins are properly aligned and inserted into their respective position of the receiver. Then apply downward pressure on the receiver, not on the board.

17. Re-secure the main board to the cluster body (do not over-tighten) and install the odometer. When installing the odometer, make certain to properly plug in the lead to the board.

18. Install rear cover and dash is ready for installation into the car. Reverse removal procedures to reinstall into vehicle.

Any questions please call us at 1-888-USM-RACER (1-888-876-7223). Thanks and enjoy.

***** Please Note: Some circuit board bulb holes are damaged from over powering the bulb socket during installation. Be careful not to over twist the socket. Doing so can cause the socket contacts to ride past the circuit board contacts causing poor contact and/or damaged to the circuit board.**